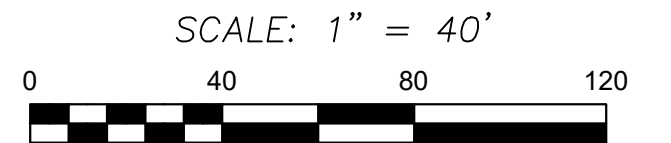
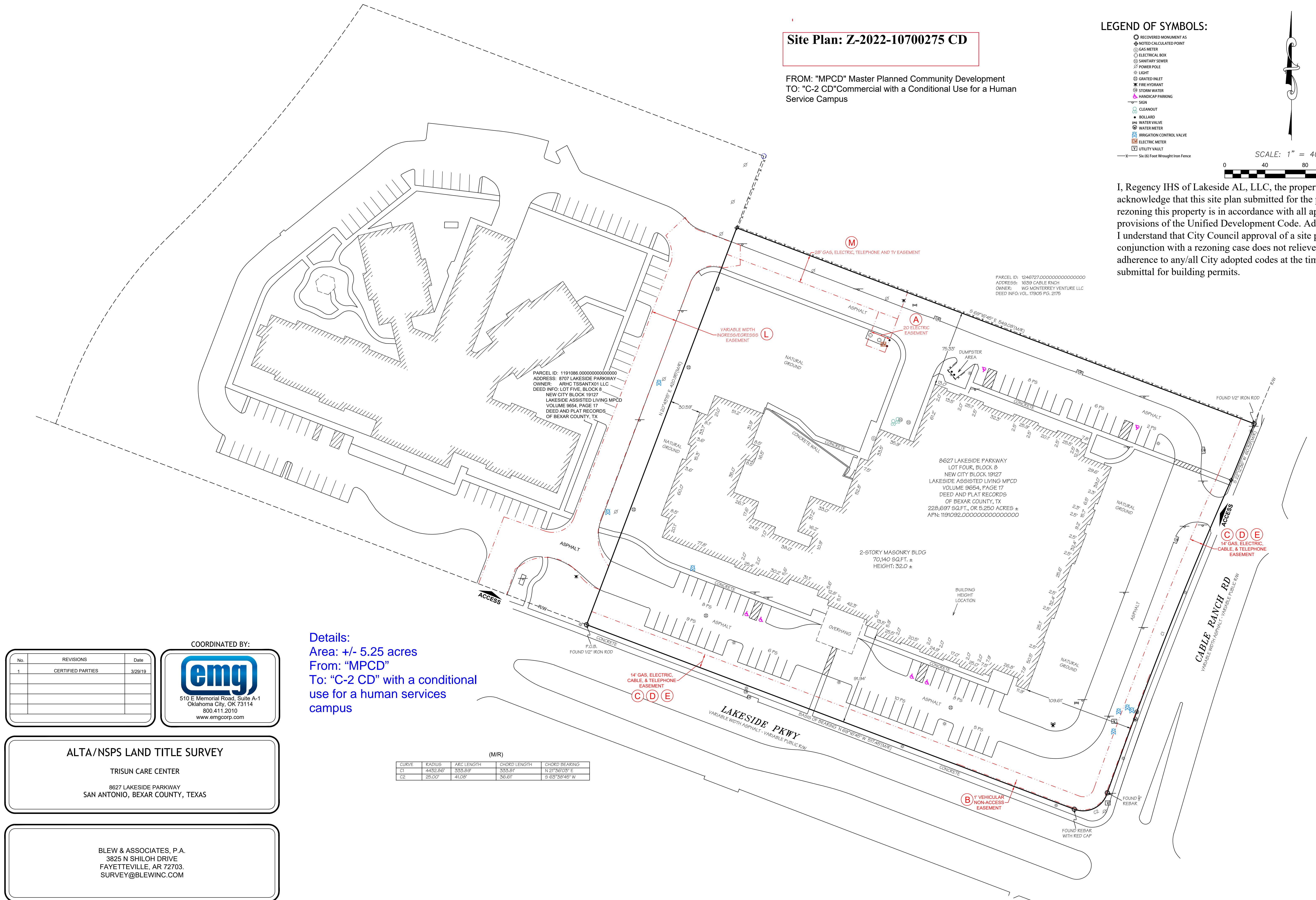


FROM: "MPCD" Master Planned Community Development
TO: "C-2 CD" Commercial with a Conditional Use for a Human
Service Campus

- RECOVERED MONUMENT AS NOTED CALCULATED POINT
- ⊕ GAS METER
- ⊖ ELECTRICAL BOX
- ⊗ SANITARY SEWER
- ⊘ POWER POLE
- ✱ LIGHT
- ⊕ GRATED INLET
- ✱ FIRE HYDRANT
- ⊗ STORM WATER
- ⊕ HANDICAP PARKING
- SIGN
- ⊕ CLEANOUT
- ⊖ BOLLARD
- ⊕ WATER VALVE
- ⊖ WATER METER
- ⊕ IRRIGATION CONTROL VALVE
- ⊖ ELECTRIC METER
- ⊕ UTILITY VAULT



PARCEL ID: 1246727.000000000000000000
ADDRESS: 1639 CABLE RNCH
OWNER: WG MONTERREY VENTURE LLC
DEED INFO: VOL. 17905 PG. 2175



No.	REVISIONS	Date
1	CERTIFIED PARTIES	3/29/19



510 E Memorial Road, Suite A-1
Oklahoma City, OK 73114
800.411.2010
www.emgcorp.com

8627 LAKESIDE PARKWAY
SAN ANTONIO, BEXAR COUNTY, TEXAS

BLEW & ASSOCIATES, P.A.
3825 N SHILOH DRIVE
FAYETTEVILLE, AR 72703.
SURVEY@BLEWINC.COM

(M/R)				
CURVE	RADIUS	ARC LENGTH	CHORD LENGTH	CHORD BEARING
C1	4432.86'	333.89'	333.81'	N 21°36'03" E
C2	25.00'	41.08'	36.61'	S 63°38'45" W